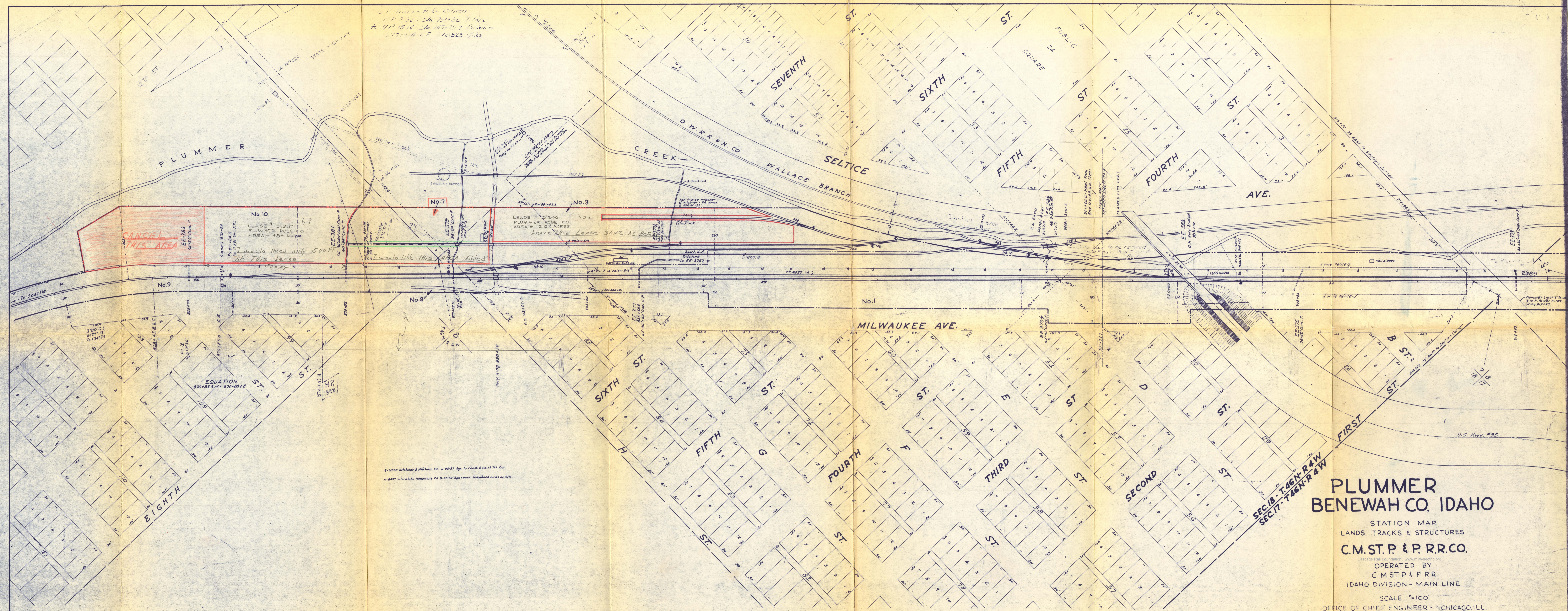


01. Trackage to be retained
 MP 2.52 Sta 7+11.90 Tillamook
 to MP 15.14 Sta 145+12.7 Plummer
 177+4.4 LF = 16,825 ft. lcs



9-6220 Hitchner & Hitchner Inc. 6-24-47 Ag. to Const. & Maint. Tr. Ex.
 H-8477 Interstate Telephone Co. 8-17-50 Ag. cover Telephone Lines on R/W

PLUMMER BENEWAH CO. IDAHO

STATION MAP
 LANDS, TRACKS & STRUCTURES
C.M. ST. P. & P. R.R. CO.
Cascade Rail Foundation - www.mileelectric.org
 OPERATED BY
 C M ST P & P RR
 IDAHO DIVISION - MAIN LINE
 SCALE 1"=100'
 OFFICE OF CHIEF ENGINEER - CHICAGO, ILL.
 REDRAWN JANUARY 1945

SEC. 18 - T. 46 N. - R. 4 W
 SEC. 17 - T. 46 N. - R. 4 W